



COULD YOU BE OUR NEXT FRONT END DEVELOPER

Working at the forefront of open data publication in the UK, we help our clients manage, publish and gain insight from data in a wide range of domains, often with a positive benefit for society. We're expanding, and are open both to practiced JavaScript / Ruby developers and to people with less experience, including new graduates, who are keen to learn.

WHO WE'RE LOOKING FOR



ABOUT YOU

Adaptable and positive with a natural curiosity that relishes getting to grips with new subject domains and diverse user requirements



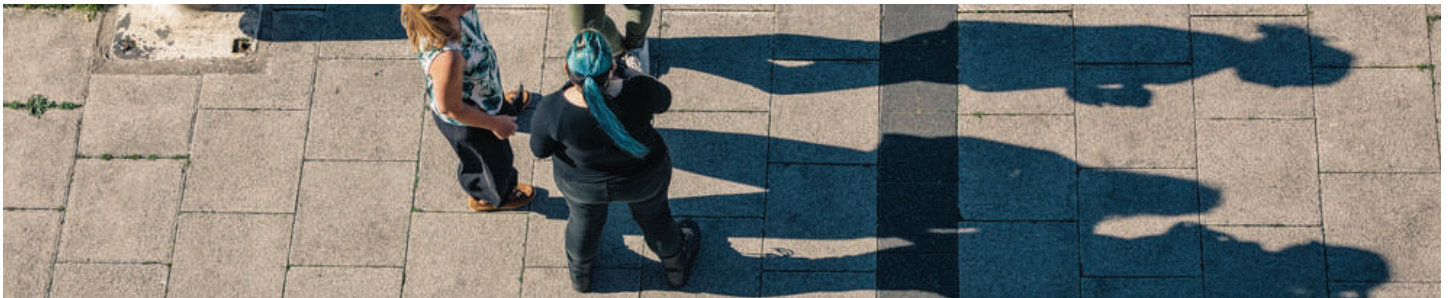
EXPERIENCE & SKILLS

If you have at least one meaningful project tucked under your belt, whether from university, employment or personal and are able to work independently we'd like to hear from you



EDUCATION & TRAINING

Although having some kind of formal education may be helpful, we're more interested in what you can demonstrate practically



WE'RE LOOKING FOR



- Toward the beginning of your career, proficient with one programming language and competent with elements of web applications JavaScript, HTML and CSS
- At least two years of experience working with more than one language, and familiarity working on client facing projects, confident in your ability to notice bad usability and be motivated to improve
- Competent in more than one language, and looking to use these skills in a number of different subject domains

For salary expectations, more details and how to apply visit the careers section of our website

www.epimorphics.com/careers

WHAT TO EXPECT



You'll get 25 days holiday + bank holidays, a great pension scheme, a budget for laptop and time to attend conferences of your choosing with discretionary travel assistance



You can opt into our EMI share scheme - all shareholders are employees



We offer flexible working terms. Many people work from home on Friday and at the discretion of your manager, we're flexible the rest of the time so life commitments won't be a problem



Portishead, Bristol

An attractive coastal town with an independent high street and marina just a stone's throw away

WORKING AT

EPIMORPHICS

We're community minded. We care about what our employees think and want them to have a say in what we do and how we do it. We've worked with both public and private companies to build ground-breaking linked data services which have a positive benefit on society.

Our team comprises accomplished computer scientists who helped define the standards for the Semantic Web and Linked Data. Between us we form an eclectic bunch of people who love to solve interesting challenges, big and small.

SOME HISTORY

- 100% employee owned company
- Client focused projects
- R&D product based development

WE WORK WITH

GETTING HERE



From Bristol Bus Station you can be here in 40 minutes by catching the X3 and getting off at Sainsbury's. Or if you've got a podcast you want to finish, take the X4 for a more scenic route around the houses and be here in an hour



It's about an hour cycle from Bristol, but when you get here we have secure bike storage and tea, coffee and biscuits on tap



If public transport and cycling aren't your thing, we've got a small onsite car park and plenty of free on-road parking making it easy to commute from further away